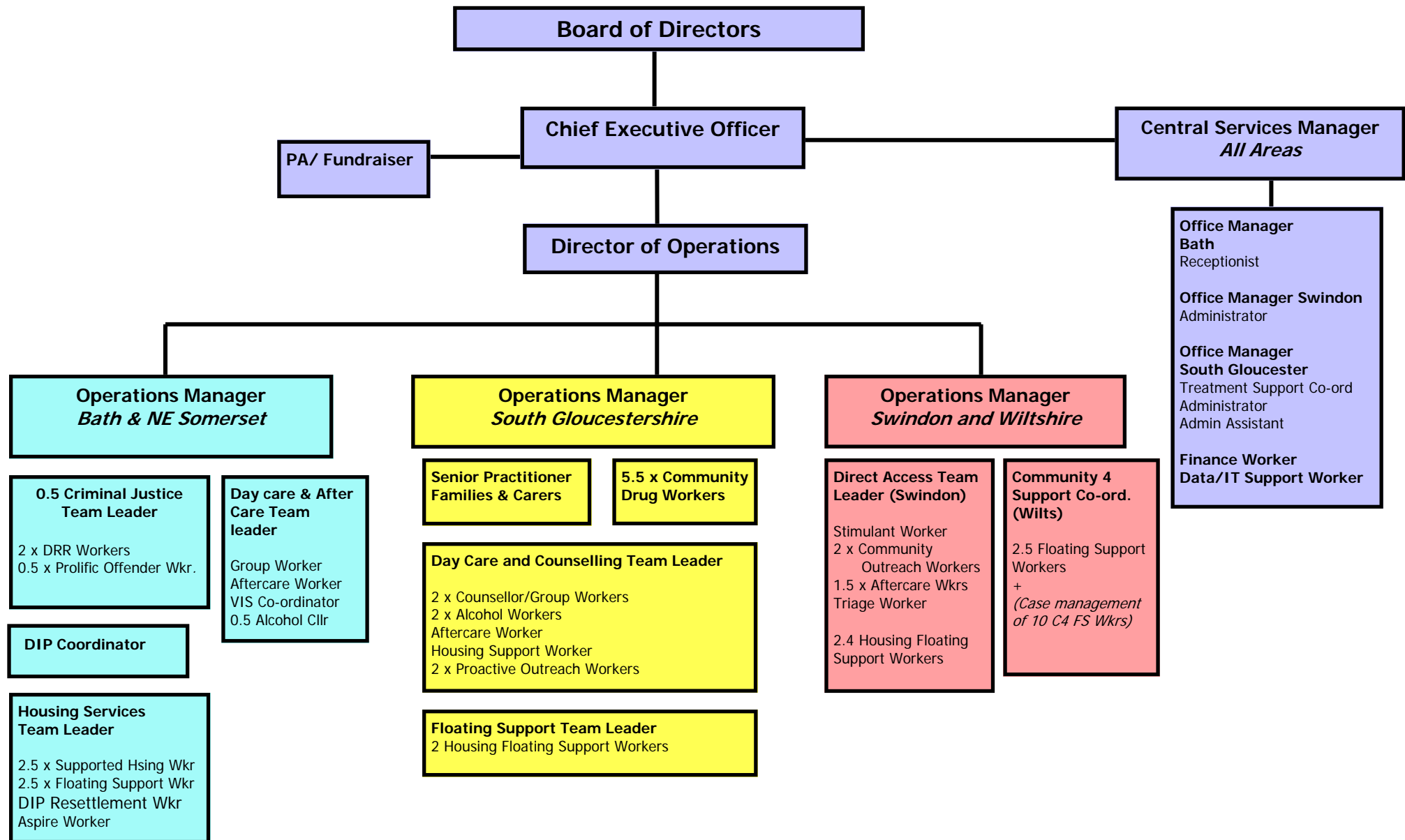


DHI Organisational Chart



Board of Directors

Chief Executive Officer

PA/ Fundraiser

**Central Services Manager
All Areas**

Director of Operations

**Operations Manager
Bath & NE Somerset**

0.5 Criminal Justice Team Leader
2 x DRR Workers
0.5 x Prolific Offender Wkr.

Day care & After Care Team leader
Group Worker
Aftercare Worker
VIS Co-ordinator
0.5 Alcohol Cllr

DIP Coordinator

Housing Services Team Leader
2.5 x Supported Hsing Wkr
2.5 x Floating Support Wkr
DIP Resettlement Wkr
Aspire Worker

**Operations Manager
South Gloucestershire**

Senior Practitioner Families & Carers

5.5 x Community Drug Workers

Day Care and Counselling Team Leader
2 x Counsellor/Group Workers
2 x Alcohol Workers
Aftercare Worker
Housing Support Worker
2 x Proactive Outreach Workers

Floating Support Team Leader
2 Housing Floating Support Workers

**Operations Manager
Swindon and Wiltshire**

Direct Access Team Leader (Swindon)
Stimulant Worker
2 x Community Outreach Workers
1.5 x Aftercare Wkrs
Triage Worker
2.4 Housing Floating Support Workers

Community 4 Support Co-ord. (Wilts)
2.5 Floating Support Workers
+
(Case management of 10 C4 FS Wkrs)

Office Manager Bath
Receptionist

Office Manager Swindon
Administrator

Office Manager South Gloucester
Treatment Support Co-ord
Administrator
Admin Assistant

Finance Worker
Data/IT Support Worker